

CALL (714) 282-8160 FAX (714) 282-7031
CPT CODE GUIDELINES FOR MRI

Brain

70551 - w/o contrast
70552 - w/ contrast
70553 - w/o & w/ contrast

Cervical Spine

72141 - w/o contrast
72142 - w/ contrast
72156 - w/o & w/ contrast

Thoracic Spine

72146 - w/o contrast
72147 - w/ contrast
72157 - w/o & w/ contrast

Lumbar Spine

72148 - w/o contrast
72149 - w/ contrast
72158 - w/o & w/ contrast

Upper Extremity, Joint

(shoulder, elbow, wrist, finger)
73221 - w/o contrast
73222 - w/ contrast
73223 - w/o & w/ contrast

Upper Extremity, Other Than Joint

(humerus, forearm)
73218 - w/o contrast
73219 - w/ contrast
73220 - w/o & w/ contrast

Lower Extremity, Joint

(hip, knee, ankle)
73721 - w/o contrast
73722 - w/ contrast
73723 - w/o & w/ contrast

MRA (Angiograms)

72198 - MRA Pelvis
74185 - MRA Abdomen/Renal
w/ contrast
70544 - MRA Head w/o contrast
(circle of willis)
70547 - MRA Neck w/o contrast
70549 - MRA Neck w & w/o
contrast

MRI Orbit, Face And Neck

70540 - w/o contrast
70542 - w/ contrast
70543 - w/o & w/ contrast
70336 - TMJ

MRI Chest/ Breast

71550 - w/o contrast
71551 - w/ contrast
71552 - w/o & w/ contrast
77058 - Breast - Unilateral
77059 - Breast - Bilateral

MRI Abdomen

74181- w/o contrast
74182 - w/ contrast
74183 - w/o &
w/ contrast

MRI Pelvis

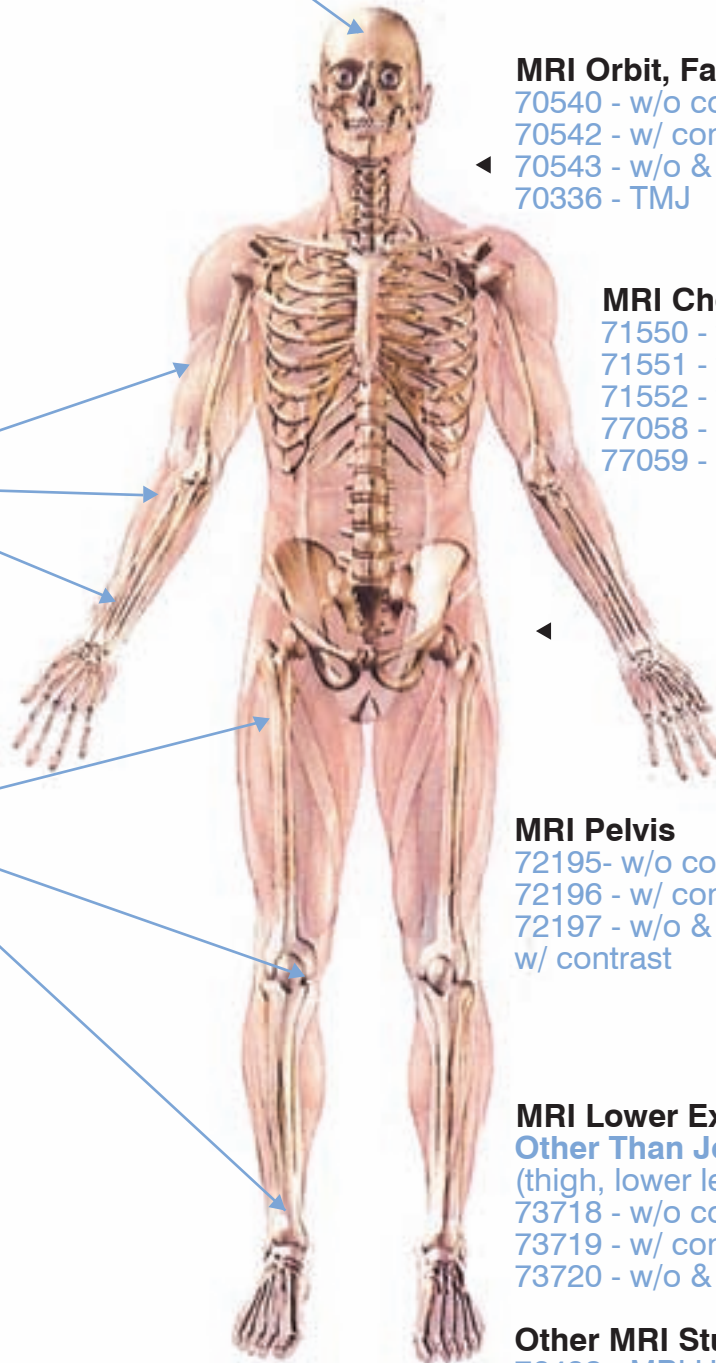
72195- w/o contrast
72196 - w/ contrast
72197 - w/o &
w/ contrast

MRI Lower Extremity, Other Than Joint

(thigh, lower leg, foot)
73718 - w/o contrast
73719 - w/ contrast
73720 - w/o & w/ contrast

Other MRI Studies

76498 - MRI Unlisted Procedure



500 S. Anaheim Hills Rd. Ste. 136 Anaheim, CA 92807
www.anaheimhillsmri.com